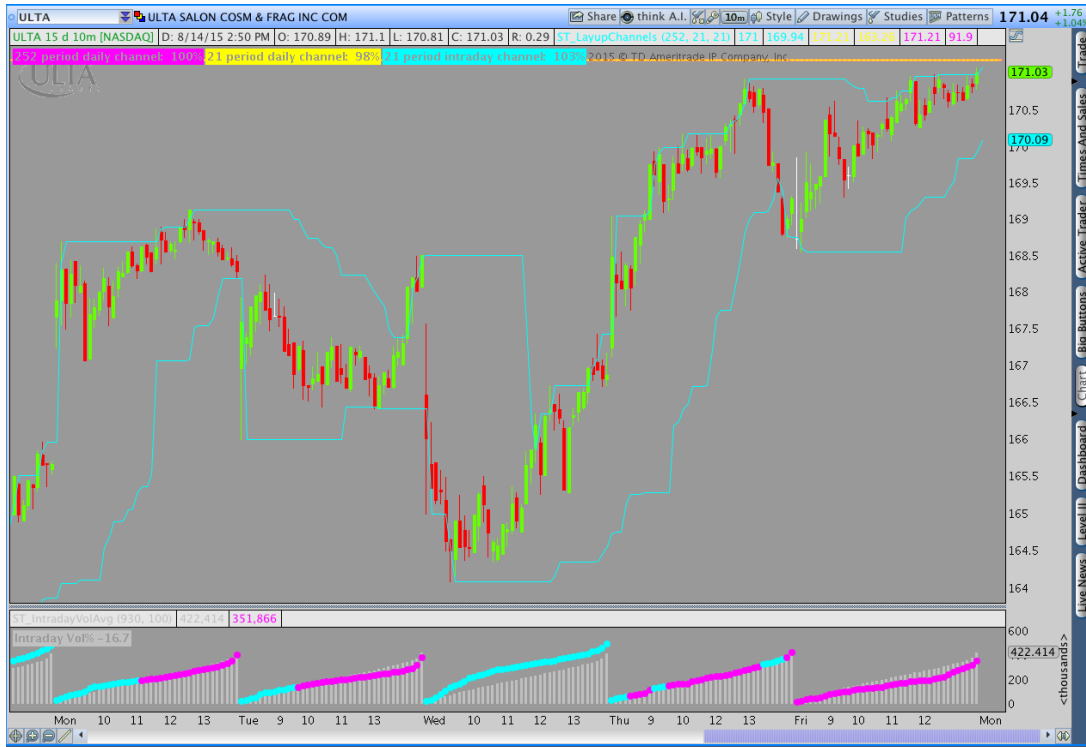


Simpler Trading Layup Indicator Package for thinkorswim®

www.SimplerIndicators.com



Symbol	Vol%	CH%252D	Ch%21D	Ch%21H	Last	Net Chng	Volume
NFLX	-47.1	2.521	77.0	66.0	123.39	0	15,376
AAPL	-31.3	53.0	27.0	94.0	115.96	0	116,402
CMG	-34.4	94.0	90.0	90.0	748.34	0	0
/ES[US]	-28.1	85.0	53.0	103.0	2085.50	-4.00	142,987
/TF[US]	-20.1	67.0	28.0	94.0	1208.8	-1.30	3,187
/NQ[US]	-31.8	84.0	40.0	82.0	4526.50	-5.25	22,976
GPRO	-51.2	35.0	42.0	71.0	58.85	0	3,116
FB	-50.1	1.0765	49.0	91.0	94.42	0	46,969
TWTR	-34.4	8.0	22.0	53.0	29.06	0	43,246
IBB	-5.1	76.0	16.0	45.0	364.06	0	606
USO	-21.5	0.0	0.0	0.0	13.99	0	241,916
XLF	-6.9	0.2085	105.0	105.0	25.25	0	2
AZO	-11.9	98.0	84.0	84.0	741.27	0	0
QQQ	-36.1	84.0	37.0	78.0	110.51	0	59,363
IWM	-33.8	66.0	27.0	92.0	120.36	0	37,535
UUP	223.6	0.2208	49.0	49.0	25.24	0	100
SPY	-24.3	86.0	96.0	96.0	209.42	0	638,363
/CL[US]	-34.4	N/A	21.0	21.0	41.73	-.77	40,896
ULTA	-8.1	100.0	98.0	100.0	171.04	0	100



The risk of loss in trading can be substantial and may not be suitable for all investors.

Table of Contents

1. Special Notes for thinkorswim users
2. Installing the Indicators
3. Configuring the Custom Watchlist Column Scripts
4. Using the Chart Indicators

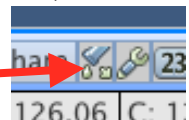
1. Special Notes for thinkorswim Users

Please note the following that are due to the inherent platform limitations of thinkorswim:

1. During periods of high market activity, the custom watch list columns may fail to load or update. This usually results in seeing “loading” or “NaN” listed in the column. You can reduce the quote load on the server by using a smaller watchlist.
2. If watchlist columns appear unresponsive or fail to completely load, you can refresh the page by navigating to another tab (e.g. Charts) briefly and then back.
3. The calculations in the thinkorswim platform will not match those of TradeStation. This is a result of the inflexibility within thinkorswim to exactly specify the calculation period for watch list columns.

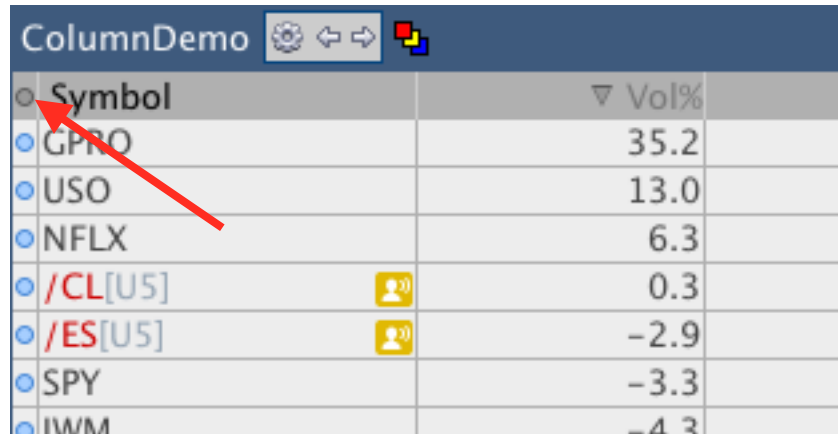
2. Installing the Indicators

1. Download the ST_IntradayVolumePercentCustomColumnSTUDY, ST_ChannelPercent_CustomColumnSTUDY.ts, ST_LayupChannelsSTUDY.ts, and ST_IntradayVolAvgSTUDY.ts files to your desktop.
2. Select a thinkorswim Charts window.
3. Click the “Edit Studies” dropper icon.
4. Click the “Import” button.
5. Navigate to your desktop and select all four files using the shift key.
6. Click Open. The indicators have now been imported into thinkorswim.



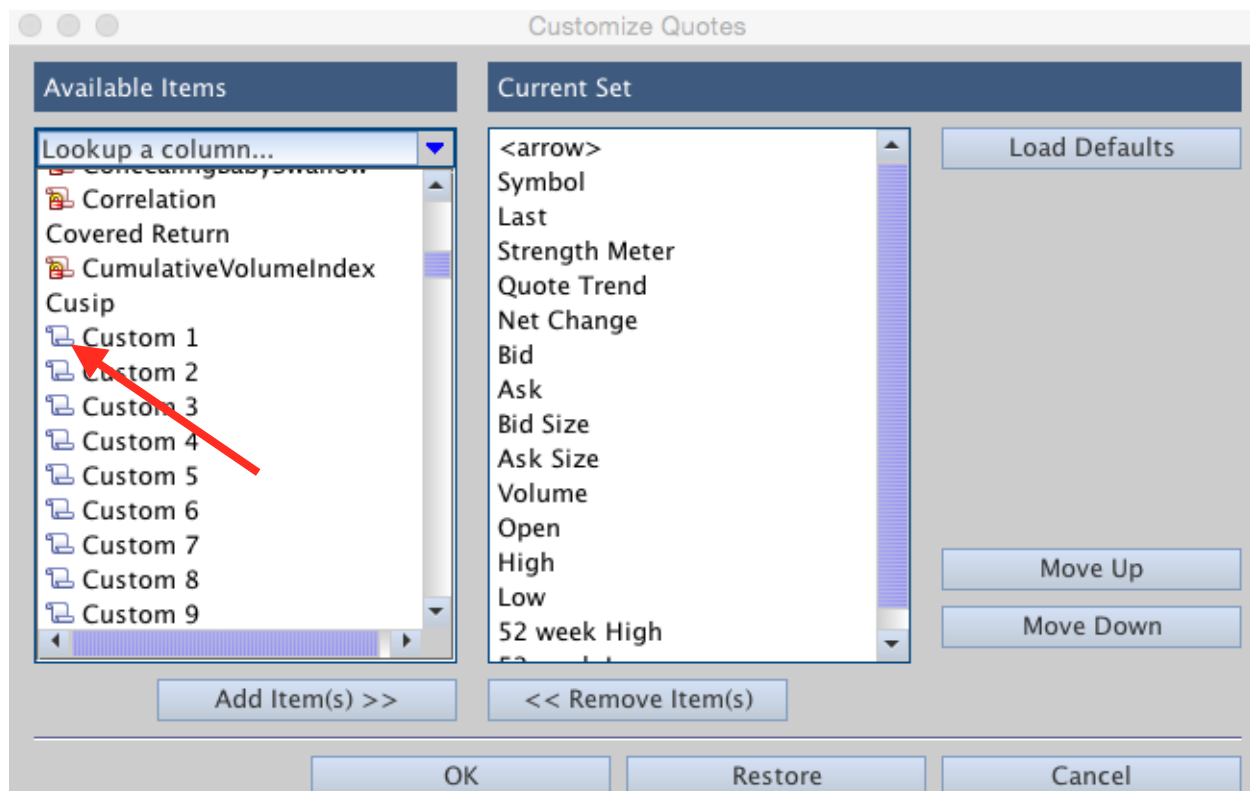
3. Configuring the Custom Watchlist Columns

1. Select the MarketWatch/Quotes tab within thinkorswim.
2. Click the small dot just to the left of the word "Symbol" and choose customize.



Symbol	Vol%
GPRO	35.2
USO	13.0
NFLX	6.3
/CL[U5]	0.3
/ES[U5]	-2.9
SPY	-3.3
IWM	-4.3

3. Find an unused custom column in the list. By default they are called Custom 1 etc. Click the small script icon to edit the column.



The risk of loss in trading can be substantial and may not be suitable for all investors.